

LED HIGH BAY LIGHT SERIES

FES101



10W
AC85-264V

► Size Chart



► Applications:
Supermarket, store, indoor lighting, warehouse, home lighting projects and so on.

FES102



20W
AC85-264V

► Size Chart



► Applications:
Supermarket, store, indoor lighting, warehouse, home lighting projects and so on.

FEI101



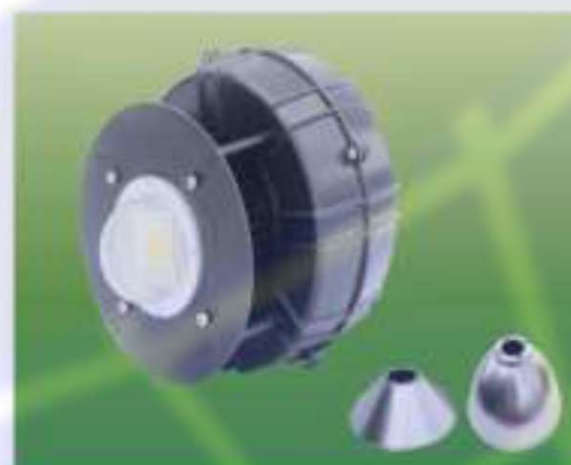
30W
DC12V DC24V
AC85-264V
AC277V

► Size Chart



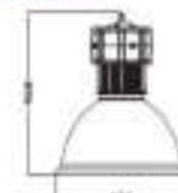
► Applications:
Factory, indoor stadium, gas station, warehouse, city lighting projects.

FEI102



50W
DC12V DC24V
AC85-264V
AC277V

► Size Chart



► Applications:
Factory, indoor stadium, gas station, warehouse, city lighting projects.

FEI103



80W

► Size Chart



► Applications:
Factory, indoor stadium, gas station, warehouse, city lighting projects.

FEI104



100W
AC85-264V
AC277V

► Size Chart



► Applications:
Factory, indoor stadium, gas station, warehouse, city lighting projects.

FEI109



120W

AC85-264V

AC277V

Size Chart



Applications:
Factory, indoor stadium, gas station, warehouse, city lighting projects.

FEI110



160W

AC85-264V

AC277V

Size Chart



Applications:
Factory, indoor stadium, gas station, warehouse, city lighting projects.

FEI111

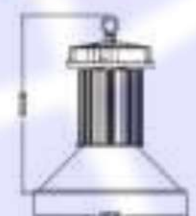


200W

AC85-264V

AC277V

Size Chart



Applications:
Factory, indoor stadium, gas station, warehouse, city lighting projects.

FEI112



50W

AC85-264V

AC277V

Size Chart



Applications:
Factory, indoor stadium, gas station, warehouse, city lighting projects.

FEI113



100W

AC85-264V

AC277V

Size Chart



Applications:
Factory, indoor stadium, gas station, warehouse, city lighting projects.

FEI114



150W

AC85-264V

AC277V

Size Chart



Applications:
Factory, indoor stadium, gas station, warehouse, city lighting projects.

FEI115



120W

AC85-264V

AC277V

Size Chart



Applications:
Factory, indoor stadium, gas station, warehouse, city lighting projects.

FEI116



150W

AC85-264V

AC277V

Size Chart



Factory, indoor stadium, gas station, warehouse, city lighting projects.

FEI117

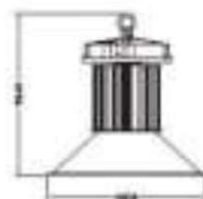


180W

AC85-264V

AC277V

► Size Chart



► Applications:
Factory, indoor stadium, gas station, warehouse, city lighting projects.

FEI118



200W

AC85-264V

AC277V

► Size Chart



► Applications:
Factory, indoor stadium, gas station, warehouse, city lighting projects.

FEI119

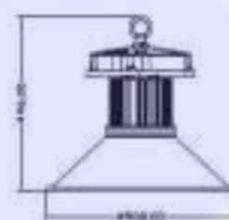


108W

AC85-264V

AC277V

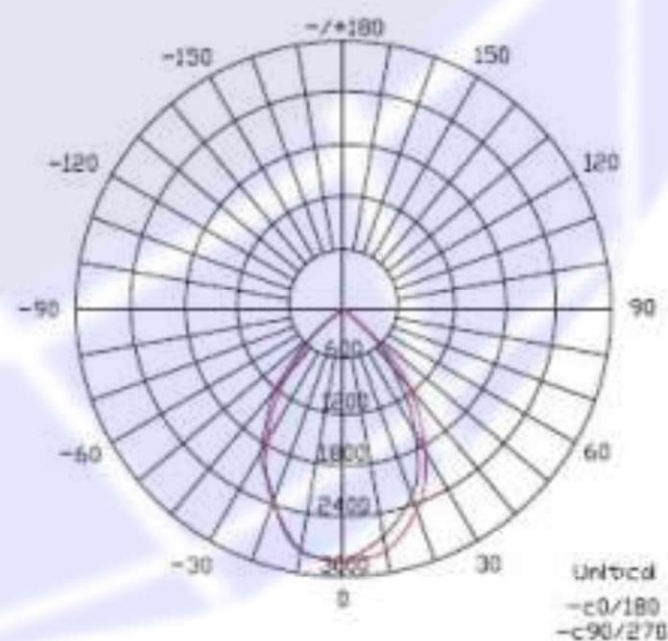
► Size Chart



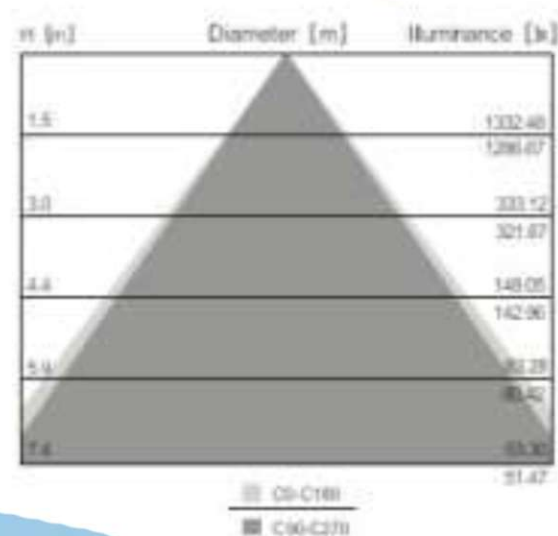
► Applications:
Factory, indoor stadium, gas station, warehouse, city lighting projects.



► Light distribution graph(80° - CW)



► Illumination intensity chart(80° - CW)



MAIN SPECIFICATIONS (T=25°C)

ITEM	DESCRIPTION
Input Voltage	AC85-264V 47-63Hz
LED	36 PCS
Power	108W
LED Efficiency	80-90Lm/W
Initial Flux	>6768Lm (Cool White) >6660Lm (Natural White) >6516Lm (Warm White)
Power Factor	>0.95
Color	Warm White / Natural White / Cool White/Red/Green/Blue/Yellow
Color Temperature	2700-3300K (Warm White) 4000-5000K (Natural White) 5300-7000K (Cool White)
Center Illuminance	1.5M : 1333 Lux 3.0M : 333 Lux 6.0M : 78 Lux
Beam Angle	120°
Life Span	>50,000 Hours
Operating Temperature	-25°C to +55°C
Storage Temperature	-40°C to +65°C
Weight	7.5 Kg
Size	Φ145mm
IP Rating	